



Corrections for March 2021
with the compliments of Adlard Coles Nautical

REEDS

Nautical Almanac 2021

Corrections to 4th March 2021 include Admiralty Notices to Mariners Week 9/21

EDITORIAL NOTES

1. Corrections to the above Almanacs are placed on www.reedsalmanacs.co.uk at the following intervals: In early January (covering the period since going to press in June); and thereafter at the start of each month from February through to June. There is no repetition, except where an earlier correction is modified by later data.
2. We thank those who have contributed helpful suggestions, all of which are considered and, if feasible, included. Please tell the Editors as soon as possible of any corrections to the Almanac(s) thought to be necessary, particularly as a result of experience at sea.

3. Contents

Pages

- 2 Reeds Update Amendment Form
- 3–8 Reeds Nautical Almanac



SIMPLY
PLUS OTIUM

Designed for new boaters to experience the delights of being in an MDL marina, by offering a no-frills attached package for boats under 10m at a highly competitive rate. From £332 per metre inc. VAT.

Register your interest or get a quote at
MDLMARINAS.CO.UK/SIMPLY



AMENDMENT/CORRECTION FOR REEDS ALMANAC

For forwarding suggested amendments to *Reeds Almanac*, *Reeds Channel Almanac*,
Reeds Western Almanac and *Reeds Eastern Almanac*

Date of report:	
Name of sender:	
Telephone:	
Email:	
Publication affected:	<input type="checkbox"/> Reeds Almanac <input type="checkbox"/> Channel Almanac <input type="checkbox"/> Western Almanac <input type="checkbox"/> Eastern Almanac Edition: <input type="checkbox"/> 2021 <input type="checkbox"/> 2020 <input type="checkbox"/> Earlier: _____
Page number(s) affected:	_____
This report relates to:	<input type="checkbox"/> Reference material <input type="checkbox"/> Passage information <input type="checkbox"/> Lights & buoys <input type="checkbox"/> Country notes <input type="checkbox"/> Area plan <input type="checkbox"/> Tides <input type="checkbox"/> Harbour information (specify): Name: _____ Ref. number: _____:_____
Amendment/Correction:	

Continue on a separate sheet if necessary

Reeds agents: I am a Reeds Agent for: _____
 I would like to become a Reeds Agent for: _____

Reports should be submitted to:

UK & Ireland, introduction, navigation, tides, safety, first aid **editor.britishtsles@reedsalmanacs.co.uk**

Continental coast (including Channel Islands and Azores), reference data, regulations, communications, weather **editor.continental@reedsalmanacs.co.uk**

Anything else: The Editors, Reeds Almanac, Adlard Coles Nautical, 50 Bedford Square, London WC1B 3DP

CORRECTIONS TO 2021 REEDS NAUTICAL ALMANAC

CHAPTER 2, REGULATIONS

2.1, CRUISING FORMALITIES, 2.1.2, after proof of VAT status, insert: and proof of vessels location at 2300, 31st December 2020. *Ed Note: The latest update to HMRC Notice 8, Sailing your pleasure craft to and from UK, advises that evidence of a vessels VAT status should be carried onboard at all times, i.e the original bill of sale and receipt for VAT paid, and also evidence of the vessels location at 2300 on 31st December 2020, such as a dated receipt for berthing/mooring fees, or receipts for work done, purchases of fuel, chandlery etc.*

2.1.1 Registration, first bullet point, amend:

- Registration under Part I is for commercial and pleasure boats >24m LOA, and costs £152 for 5 years. Vessels have to be surveyed and follows the same procedure as a large merchant vessel. It costs £72 to renew for 5 years. The certificate establishes the ship's nationality and tonnage. Details of registered ownership and mortgages can be obtained from the RSS at Cardiff.

Second bullet point, amend :

- Part 3, *The Small Ships Register (SSR)*, is for owners who want a simple registration, to prove the yacht's nationality and meet registration requirement for a privileged ensign, but it registers neither 'Title' nor mortgages. A small ship is defined as < 24m LOA. The cost is £35 for five years, and measurement only requires taking the boat's LOA.

For further details contact: UK Ships Register, (the Registry of Shipping and Seamen), Anchor Court, Keen Road, Cardiff CF24 5JW; ☎ +44(0)20 3908 5200; UKSR@mcga.gov.uk

For part 1 and part 3 online registration visit: www.ukshipregister.co.uk.

CHAPTER 5, COMMUNICATIONS

69, 5.8.1, HM Coastguard Communications, Ed Note: Radio Network Infrastructure Replacement Programme. (RNIR). *Since the summer of 2020 HM Coastguard have been replacing the radio network used for search and rescue that connects 165 remote sites around the UK to CGOC. The old copper based telephone wiring linking these sites is now out of date and it is being replaced with modern fibre based technology in a £175 million investment which will take a minimum of three years to complete. The RNIR will not cause any disruption to current operations and the new network will be rigorously tested before it is brought into service.*

CHAPTER 6, WEATHER

85, 6.1.4, Terms used in UK weather bulletins, second tinted box, **Visibility,** line 4, before Fog, insert: **Very poor or .**

86, 6.4, USING WEATHER FORECASTS, para 1, line 5, after: patterns up to, delete: five or six days, substitute: at least a week.

Para 2, lines 11-12, after: is important, delete: over periods of around 5 days, substitute: for the next eight to ten days ahead.

86, 6.5 GMDSS - MARITIME SAFETY INFORMATION, para 3, line 1, delete: the primary, substitute: a vital .

87, 6.6.3, UK/ROI 518kHz broadcasts, tinted box, second entry, **G - Cullercoats,** delete areas in toto, substitute: Viking, Forties, Cromarty, Forth, Tyne, Dogger, Humber, Thames, Fair Isle.

O - Portpatrick, after: SE Iceland, insert: excluding Shannon.

Q - Malin Head, before: Shannon, delete: Sea Areas.

T - Oostend, spelling, amend: **Oostende.** Before: Thames, delete: Sea Areas.

88, 6.6.4, UK Inshore waters forecasts on 490 kHz, tinted box, entry **C - Portpatrick,** line 2, after: Tiree, insert: Campbeltown Airport. Line 3, after: Aberporth, insert: Milford Haven.

I - Niton, lines 2-3, delete in toto, substitute: Sandtette Lt V, Greenwich Lt V, Bournemouth airport, Guernsey airport, Jersey airport, Channel Lt V, Mountbatten, Culdrose, Seven Stones Lt V, and Roches Point (Cork).

H89, TABLE 6(2) VHF broadcasts of shipping and inshore waters forecasts by HM Coastguard

South Coast, entry 3, **Falmouth,** line 2, at end, delete: Biscay, Fitzroy.

Second tinted box, **West Coast,** entry 1, **Milford Haven,** line 2, at end, delete: Shannon.

Entry 4, **Belfast,** Inshore waters forecast areas, before: 13, insert 12.

89, Bottom of page, Note: delete in toto, substitute: Readers are advised to check for changes in the MCA Maritime safety information leaflet (MCA /064) available at www.mcga.gov.uk. See also our free monthly updates from January to June available for download at www.reedsnauticalalmanac.co.uk/update.

94, 6.10.1, BBC Radio 4 shipping and other forecasts, para 1, lines 5-6, HM Coastguard broadcasts repeats as detailed in 6.8, delete in toto.

94/96 6.11 INTERNET WEATHER FORECASTS, delete entry in toto, substitute: The Internet is not an operational system in the same sense as the GMDSS; website addresses (URLs) and content can change without notice; there is little quality control. Nevertheless, it is a useful back-up as a valuable alternative source for GMDSS forecasts and information otherwise unavailable. For the UK, the Met Office has printable texts of all its marine forecasts and warnings. Search for Met Office Coast and Sea Forecast Print. Most European GMDSS texts are on-line, see Frank Singleton's Weather website for details. Météo France has an excellent app for IOS and Android devices. Private weather service texts are usually automated without human input. As with all forecasts, always check the date and time of origin.

Synoptic charts are available on-line using a browser, but the MailASail Chart Responder provides charts in compressed form by email for those with limited bandwidth.

Output from numerical weather models is available in GRIB file format. The most used source is the US Global Forecast System (GFS). Data can be downloaded free to a laptop using XyGrib and several tablet apps; all automatically saved for off-line viewing later. Other models freely available include the German ICON global model and ICON-EU, a more detailed model for European waters. These can be seen using XyGrib on a laptop or, on all platforms, using Windy.com and Ventusky.com.

For a quick look, there are browser services such as PassageWeather.com, XCWeather.com and WeatherOnline.com. The ECMWF (European Centre for Medium-range Weather Forecasts) Chart Catalogue has 10-day forecasts including synoptic charts, wind, sea temperature, sea state, rain, cloud cover and some probability forecasts. None of these can be saved.

Detailed forecasts are on the Danish (DMI), Jersey and Spanish (AEMet) Met services websites. Germany (ICON-EU and COSMO) and France (AROME) make forecasts available to third parties, for example, OpenSkiron, Windy.com and Ventusky.com. Meteociel is a good source for many computer-generated forecasts.

GRIB data are useful for interpreting GMDSS forecasts. They are particularly valuable for planning up to a week or so ahead. Save 8-10 day forecasts daily and compare each with preceding forecasts looking for consistency as a guide to reliability. If successive forecast runs give similar results, you can plan ahead with some confidence. Without consistency, work on a day-to-day basis.

96, 6.12.1 Talk to a forecaster, delete para 1 in toto, substitute: For a Met Office service ☎ 0370 900 0100 or +44 (0) 13928 85680. ☎ 0370 900 5050 for details. Jersey Met Office (H24) ☎ 01534 446770.

96, CHANNEL ISLANDS (North to South) 6.13.2, amend heading: **Weather information by public service radio.** Paras 1, 2, delete in toto, substitute: BBC Radio Guernsey 93.2 MHz, 99.0 MHz 1116 kHz, broadcasts a weather bulletin for the waters around Guernsey, Herm and Sark at 0630 LT. It contains a synopsis, warnings, coastal forecast and coastal reports from Jersey, Guernsey, Alderney, Cap de la Hague, Cherbourg, Portland and also the Channel light vessel.

96, 6.14 REPUBLIC OF IRELAND (ROI), Met Éireann, line 2, ☎, amend: +353 1806 4200.

97, upper right, tinted box, **FOREIGN LANGUAGE WEATHER INFORMATION,** delete text in toto, substitute: Going abroad it is useful to know some basic meteorological terms in other languages (see 1.6) . Use the Internet to familiarise yourself with the forecast formats, terms and place names used. If English language forecast are not available it will be easier to read texts on the Internet using Google translate, if necessary.

98, 6.16 GERMANY, 6.16.1, Deutscher Wetterdienst (DWD) delete entry in toto, substitute: DWD provides a weather service for leisure and commercial sailors, SEEWIS and KUESTE. Current

weather data and forecasts can be obtained by telephone/modem/DSL/WLAN and displayed on a PC or tablet. Users choose from an extensive range of information. For details ☎ (+ 49) (0)69 8062 6190, 📠 (+ 49) (0)69 8062 6193, or seewis-online@dwd.de

Find English texts of marine forecasts on the dwd/de site. Navigate to Wetter und Klima - Deutscher Wetterdienst - North and Baltic Sea.

98, 6.16.3 Coast Radio Stations, after tinted box, delete next para in toto, substitute:

6.16.4 DP07

For Fisher, German Bight and Humber DPO7 broadcasts from late March to early October, in German, gale and strong wind warnings on receipt. Forecasts for 12 hour with 12 hour outlook at 0745, 0945, 1245, 1645 and 1945 LT, 4-5 day outlook at 0945, 1645 and 1945.

Hamburg Ch 83, Accumersiel Ch 28, Borkum Ch 61, Bremen Ch 25, Elbe-Weser Ch 24, Nordfriesland Ch 26.

6.16.4, amend: 6.16.5 NAVTEX

6.16.5, amend: 6.16.6 Public Service Radio

6.16.6, amend: 6.16.7 HF Radio, Teletype and RadioFax

99, para 2, line 1, after: laptop, insert: or tablet

99, **6.16.7**, amend: **6.16.8 Recorded telephone forecasts for small craft**

6.16.8 amend: 6.16.9 German tidal height and differences

99, **6.17.1**, Netherlands Coastguard/Traffic Centres, para 1, line 3, 1543 amend: 1533.

101, Fig 6(12) Meteo France forecast areas and VHF weather forecasts by CROSS, centre and lower right, Étrel, Chassiron, and Cap Ferret, (continuous), amend: (every 20 minutes).

102, 6.19.4 Metmarine, delete entry in toto.

102, NORTH AND NORTH WEST SPAIN, 6.20.2, Coastguard MRCC/MRSC, Bilbao MRCC, broadcast times amend: 0433, 0833, 1033,1833,2033.

Santander MRSC, Chs 11, 72, amend: Ch 72.

103, SOUTH WEST SPAIN, 6.22.1, tinted box, **Coast radio stations, Huelva, Cádiz, Tarifa**, broadcast times, amend: 0200, 1115, 1633.

CHAPTER 9, HARBOURS, COASTS & TIDES

AREA 1, SW ENGLAND

159, FOWEY, Facilities, para 2, **FOWEY**, lines 4-5, delete: Reductions for 3 or 7 days, except Jul/Aug, substitute: Loyalty card gives free night for six nights berthing.

Para 3, line 4, delete: another, substitute 3x; pontoon, amend: pontoons.

170, DARTMOUTH, Chartlet, Upper Insert, Dittisham, E shore, NW of Greenway Ho slipway, delete 2 🚫s closest inshore.

171, DARTMOUTH, Communications, line 1, delete: 📠 832255,

Line 2, delete: 📠835220 (non-HO emergency).

Facilities, para 2, line 1, 🚫s are blue, amend: 🚫s are white.

Para 3, W Bank, last line, 26'8m max LOA, amend: 14m max LOA, depth 1-6m.

Para 4, **E of fairway**, line 3, after: pontoons, add: (14m LOA).

Services, line 1, next to No 6 buoy, amend: between buoys 8 and 9.

Line 3, at end, add: Waste pontoon with water N of Fuel barge.

Para 8, Noss Marina, line 2, 180, amend: 232; charge amend: £3-20, delete 🚫(10t).

171, UPRIVER TO DIITISHAM AND TOTNES, para 1, line 2, 4 🚫s, amend: 2 🚫s.

Para 2, lines 7-8, delete: buoys are numbered 1-11 in sequence, rather than odd/even convention for, substitute: channel is marked by.

177, RIVER EXE, Navigation, para 2, line 3, delete: the alignment of the ldg lts is questionable.

178, RIVER EXE, Lights and Marks, para 3, delete: A jetski...SWM.

179, RIVER EXE, Communications, line 1, Dr 📠 amend: 226540; lines 1-2 delete: Council River Team 📠(01392) 274306, substitute: HM 07864 958 658 [H24].

Facilities, para 9, EXETER, para 1, delete in toto, substitute: Exeter Port Authority www.exeter.gov.uk/epa is responsible for the river,

canal and harbour operations. It is based at The Harbour Masters Office, Trinity Buoystore, Camperdown Terrace, Exmouth. HM 📠01395 223265, mob 07864 958 658 [H24]. www.exe-estuary.org makes interesting reading.

AREA 2, CENTRAL S ENGLAND

212, NEEDLES CHANNEL, *Ed Note: The Needles light is reported as being temp'y unreliable during daylight hours.*

AREA 3, SE ENGLAND

254 (LH Col), OFFSHORE MARKS, line 4, **GREENWICH** 🚫, at end, add: 992351032.

263, NEWHAVEN, Navigation, *Ed Note: The wreck of FIV Joanna C with least depth 13-9m has been located in position 50° 42'·47N, 0° 04'·06E some 4.25M S of Newhaven harbour entrance. A temporary prohibited area, radius 200m, has been established, centred on the wreck.*

267, DOVER, Shelter, *Ed Note: Work continues on the new marina in the outer harbour with F R and G lts being fitted to the entry and pontoon on approach. Confirmation of its opening is awaited.*

272, RAMSGATE, Lights and Marks, line 1, *Ed Note: Ldg lts 270°, reported temp'y extinguished.*

AREA 4, E ENGLAND

278 (LH Col), APPROACHES to THAMES ESTUARY, line 9, Foreness Pt Outfall 🚫, lat/long, amend: 51°24'·58N 01°26'·12E.

297, RIVER MEDWAY (SHEERNESS TO ROCHESTER), Navigation, *Ed Note: Gillingham Reach, a sunken motor launch has been reported in the SEGAS moorings, LNTM 18/21 refers.*

313, RIVER BLACKWATER, Facilities, para 2, **TOLLESBURY**, line 1, e-mail, amend: hm@tollesburymarina.com

AREA 7, NE SCOTLAND

407, MACDUFF/BANFF, Shelter, **Banff**, *Ed Note: Repair works are taking place in the vicinity of 57° 40'·21N., 2° 31'·33W. As a result Banff Harbour Marina will be closed 29th Jan - 17th Aug 2021. During this period there will be no access to the harbour and vessels should proceed to Macduff 1M to the East.*

AREA 8, NW SCOTLAND

462, FORT WILLIAM/CORPACH, Chartlet, S appr to Fort William, delete: SHM, G flare and annotations Fl.G.3s and G Fort William.

AREA 9, SW SCOTLAND

476 (RH Col), LOCH LONG and LOCH GOIL, line 6, Ravenrock Pt 🚫, at end add: 992351319.

Last 2 lines, delete in toto, substitute: Cnap Pt Dir It 024°; WRG 10m W8M RG 6M, by day WRG 3M; vis: 020-5°-G-022-5°-AIWVG-023-5°-W-024-5°-AIWR-025-5°-R-027-5°; 56°07'·38N 04°50'·19W.

481, CRINAN CANAL, Navigation, lines 3-6, delete: Off NW corner... Black Rock. *Ed Note: marks denoting shellfish beds removed.*

485, CAMPBELTOWN, Shelter, line 3, after: berthing, add: with some swell on outside in strong E'ly wind.

485, ADJACENT ANCHORAGE IN KILBRANNAN SOUND, para 1, **CARRADALE BAY**, line 3, after: corner, add: or in middle of bay in 5m.

486, LAMLASH, Facilities, line 1, charges, amend: £10 pay ashore.

486, OTHER HARBOURS ON ARRAN, para 2, **LOCH RANZA**, line 5, after: jetty, add: or by phone [number on buoy].

486, HARBOURS AND ANCHORAGES AROUND BUTE, para 2, **WEST KYLE**, line 6, delete: maintained by them.

Para 3, **CALADH HARBOUR**, last line, after: stores, add: or shore access in hbr.

487, ROTHESAY, Shelter, line 3, after : harbour, add: and swell in outer hbr.

Line 4, delete: (and whilst berthed).

496, FAIRLIE QUAY, Shelter, line 3, delete: unless calm settled weather is forecast.

AREA 10, NW ENGLAND, IoM and N WALES

529, HOLYHEAD, Communications, line 2, 763071, amend: 606700. lines 3-4, delete: Broadcast of local nav info/warnings 1200 (UT) daily on Ch 14.

Facilities, para 1, Marina, *Ed Note: The Marina hopes to start constructing a rubble wall/breakwater this year. In the meantime they are offering swinging moorings on a monthly basis with alongside visitor berthing on the pontoon connected to shore. Charges are currently £3-10/m with a short stay at £12 subject to review in April. Petrol and diesel is available in cans. The boat hoist has a capacity of 25T and the chandlery is open.*

Para 2, Inner Hbr, delete: ☎762304.

Para 3, Holyhead SC (HSC) ☎762526;charges, amend: Ⓜ £1-70/m.

AREA 12, S IRELAND

586, DUN LAOGHAIRE, Chartlet, Car Ferry (St Michaels) Pier, pier hd lt, characteristics, 2FG(vert), amend: FI.G.3s.

605, ADJACENT HARBOURS, LAWRENCE COVE, line 2, delete ☎027 75044, substitute: mob 087 9125930.

Line 3, charges, amend: (€2-75), after: Ⓜ add: (€3/nt).

610, SHANNON ESTUARY, Communication, lines 1-2, delete in toto, substitute: Shannon Estuary Radio Ch 11 for estuary transit/pilotage, 14 berthing/unberthing ops, 16 Emergency only.

AREA 14, WEST DENMARK

660, HANSTHOLM, Chartlet, [paste in new chartlet on page 6](#) showing completion of harbour enlargement works. *Ed Note: This major engineering project to enlarge the harbour began in 2018 and has created a new outer entrance, a new eastern breakwater, a large area of reclaimed land and new commercial quays.*

660, HANSTHOLM, Shelter, lines 4-6, WIP 2020/21...with care, delete in toto.

AREA 15, GERMANY

684, RIVER ELBE, *Ed Note: Report indicates major dredging operations ongoing between Cuxhaven and Hamburg with temporary restricted areas established in and nearby the fairway which will impact on shipping and pleasure craft movements.*

AREA 17, NORTH FRANCE

778, ST VALÉRY-EN-CAUX, Facilities, Marina, line 2 Ⓜ pricing amend: €4-00.

779, FÉCAMP, Facilities, para 1, Marina, line 2, Ⓜ pricing amend: €4-00. *Ed Note: WIP 2021/22, Avant port, replacement of all pontoons. HM assures that visitors should be able to get berths as usual.*

780, LE HAVRE, Facilities, Marina, line 4, Ⓜ pricing amend: €3-75.

784, HONFLEUR, Facilities, para 1, Avant Port, line 4, Ⓜ pricing amend: €4-00; line 5, Vieux Bassin Ⓜ pricing amend: €4-00. *Ed Note: Vieux Bassin closed until 15/04/21, for bridge rebuilding.*

787, DEAUVILLE, TROUVILLE, Facilities, para 1, Port Deauville Marina, line 3, Ⓜ pricing amend: €3-90. After: wi-fi, insert: Caution, depth on Ⓜ pontoon, rptd. less than 1-7m LW neaps.

Para 4, Bassin Morny, *Ed Note: newly refurbished Ⓜ. Add at end of entry: Ⓜ (8t).*

788, DIVES-SUR-MER, para 1, Marina, line 7, Ⓜ pricing amend: €3-90.

789, OUISTREHAM, line 1, Harbour ratings, Ambiance, amend: ⓂⓂⓂ.

Navigation, tinted box, line 1, WIP, amend: 2021-22.

Facilities, para 2, lines 1-2, after: Société des Régates entry insert: Nautical Centre, (CANO), Paul Émile Victor pier, E side of locks, see: www.centre-activites-nautiques-ouistreham.fr

789, HARBOUR AT SOUTH END OF OUISTREHAM CANAL, CAEN, para 5, line 3, delete: free wi-fi, substitute: wi-fi, 4 hours free.

791, PORT-EN-BASSIN, Communications, line 1, after: CROSS, insert: 196. Line 2, Auto, amend: 08-99-71-02-14. *Ed Note: In spite of free forecasts on mobile phones and apps the Météo Répondeur Automatique service soldiers on, cost €2-99 plus call charge!*

Line 2, after: Police, insert: Gendarmerie, 02-31-51-69-80.

Line 4, HM, amend: 02-31-51-78-10.

Line 5, at end, add: Tourist Office 02-31-22-45-80.

Facilities, para 2, Bassin1, line 2, pontoon, Ⓜ pricing amend: €0-87m.

Line 3, after Ⓜ, €3.00 pp/day, add: pay/obtain entry code at Tourist Office.

Lines 5-6, Call Gatemaster...early, delete in toto. *Ed Note: The gate is always open HW +/- 2.*

AREA 18, CENTRAL N FRANCE

809, CARTERET, Navigation, para 2, line 6, after : sand, delete rest of para, substitute: as far as the N end of the fish quay and the new (2020) sill (dries 6-3m) with flapgate which retains a depth of 4m in the dredged inner harbour and marina beyond. Access HW +/- 2½ for 1-5m draft over sill, and cross it midway between the prominent R and G bcns, (FI (2) R 6s and G FI(2)G 6s to clear the large concrete base on each side. *Ed Note: this new sill and much enlarged floating basin will enable the marina's berthing capacity to increase from 370 to nearly 700, inc 90 Ⓜ when the previously drying mooring area on the N shore, just SW of the marina, now dredged 4m, has new pontoons installed between March and July 2021. The original marina sill will now be removed. Ashore, a new extension to the Bureau de Port is also ongoing.*

Facilities, para 1, line 3, delete: Access...within

810, CARTERET, Chartlet, [paste in new chartlet on page 8](#) showing location of new tidal sill in approach to marina, new dredged depths and associated WIP 2021, marina expansion.

814, ST MALO, Facilities, para 2, Les Bas-Sablons Marina, line 4, Ⓜ pricing amend: €4-10.

Para 9, Port Vauban, line 4, Ⓜ pricing amend: €4-70, delete: (10m... Aug).

AREA 19, CHANNEL ISLANDS

830 (LH Col), LITTLE RUSSEL CHANNEL, lines 5-6, Platte Fougère ✨ at end of entry insert: TE 2020. *Ed Note: With the fog signal now out of action since 2017, the permanent removal of the Racon, (see January 2021 update) and the December 2021 failure of the temporary light installed after the lighthouse fire in May 2016 this important navigational aid is currently reduced to a daymark only. A new LED light was installed last summer prior to the pandemic but commissioning cannot begin until Covid-19 social distancing requirements are removed and suitable weather conditions allow access.*

834, 9.16.6, SPECIAL NOTES: CHANNEL ISLANDS, para 5, Customs, *Ed Note: Further to the information in the January 2021 Update, the link to the 'Travel Tracker account' has now changed to: <https://covid19.gov.gg/guidance/travel/traveltracker>.*

Following the latest national lock down the Visitors' moorings in Guernsey, Alderney Sark and Herm are all closed to vessels from outside the Bailiwick of Guernsey.

St Peter Port will only accept visiting vessels from outside the Bailiwick if there is an urgent requirement to do so. Any vessel visiting the Bailiwick of Guernsey must first contact Guernsey VTS on VHF Ch 12, or Alderney Port Control on VHF Ch 74 declaring which country they have come from, if there is sickness on board and the 'urgent' nature of their visit. LNTM 005/2021 COVID -19, Pleasure Vessels Not Registered in the Bailiwick of Guernsey refers.

In the current rapidly changing situation it is also advisable to check regularly: <http://www.harbours.gg/Guernsey-Navigation-Warnings-Notices>. For Alderney, see <http://www.alderney.gov.gg/article/172528/Harbour>.

Para 6, Speed limits, at end of para insert: Alderney, 4kts in fairway, moorings and commercial quay area.




835, BRAYE HARBOUR, Facilities, para 4, line 2, Mainbrayce. *Ed Note: Currently being rebuilt into 2 storeys, due to re-open later this year. The shop has temporarily relocated nearby in a fishermans shed, and is providing basic supplies.*

839, MINOR HARBOURS AND ANCHORAGES AROUND GUERNSEY, East Coast, para 2, Havelet Bay, *Ed Note: The landing slip close W of Castle Cornet which was badly damaged in heavy weather, November 2018, still remains unusable in spite of promised repairs.*

AREA 20, NORTH BRITANNY

858 (RH Col), TRÉGASTEL-PLAGE, line 4, Les Triagoz ✨, at end of entry insert: 992271324.

888, CAMARET, Facilities, para 1, Port Vauban, line 5, Ⓜ pricing amend: €2-97. wi-fi €5-00.

Line 7, after: Nearest, delete:  available at, substitute:   at Coopérative maritime,

888, CAMARET, Chartlet: [paste in new chartlet on page below](#) showing new location of fuel berth.

AREA 23, NORTH & NORTH WEST SPAIN

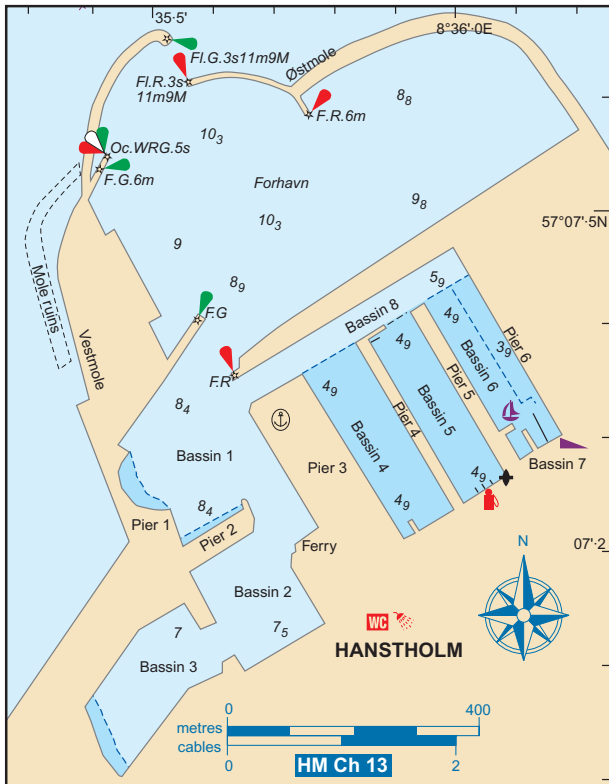
966 (RH Col), SANTANDER, Ed Note: delete entry in January 2021 update re: Ensenada de El Sardinero. The Wind turbine, associated buoys and restricted area have now been discontinued.

976, SANTANDER, Chartlet. Ed Note; delete new chartlet in January 2021 update showing location of wind turbine, associated buoys and restricted area; [paste in new chartlet on page 7](#) showing designated ship anchorage in N & W approach to port.

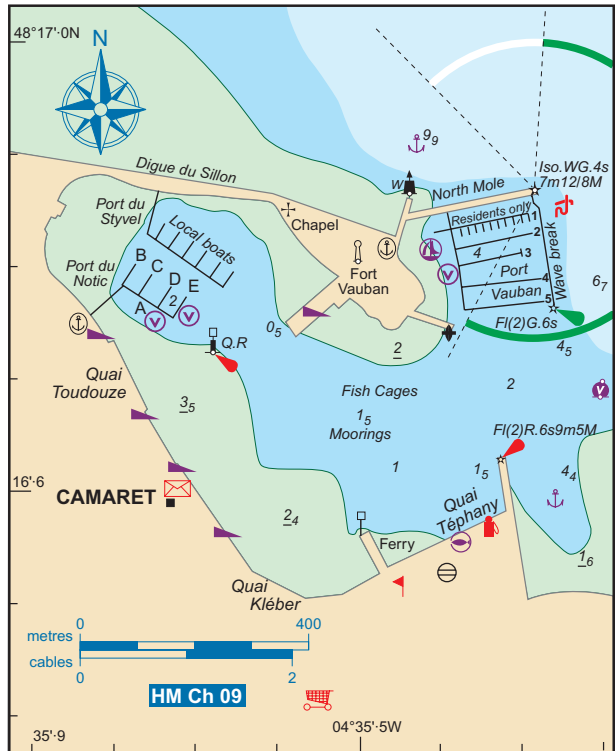
AREA 26, PORTUGUESE ISLANDS

1043 (RH Col), PRAIA DE VITÓRIA, line 3, N mole \swarrow , Fl 5s, at end of entry add: TE 2021

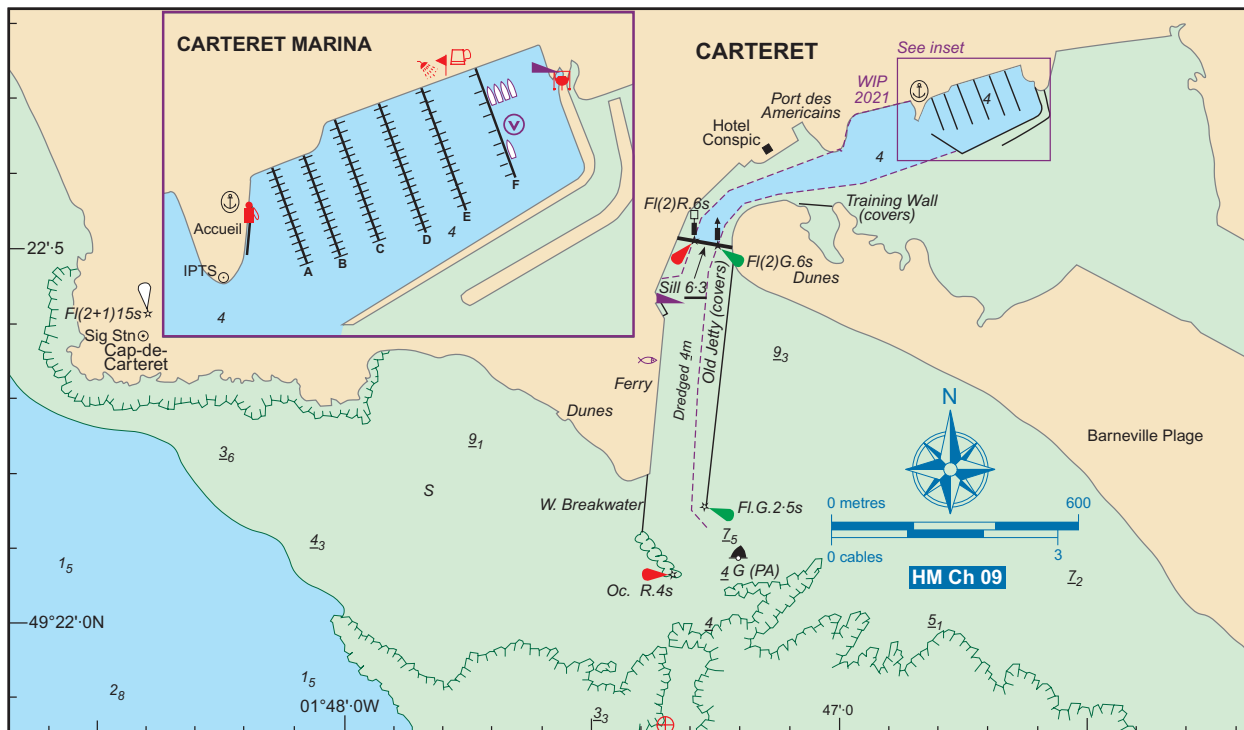
1048, PRAIA DE VITÓRIA (TERCEIRA), Ed Note: WIP N side of entrance to southern fishing harbour, comprising two large concrete platforms, within a prohibited area marked by Y SPM buoys, all Fl (2) WR. Mariners are advised to navigate with caution in this area. WNTM 531(T)21 refers.



660, HANSTHOLM



888, CAMARET



810, CARTERET